

Omtec's PBT® Ball Transfers are so unique...

they are patented in 21 of the worlds top industrialized countries!

Omtec PBT Ball Transfer Strips are designed for easy drop in installation.

Omtec Modular design PBT Ball Transfer Strips fit virtually any roller conveyor.

PBT Ball Transfer Strips fit in between or in place of rollers in conveyor lines.

Omtec PBT Pop Up Ball Transfer Strips are...

NO ELECTRICITY REQUIRED!

ideal for conveyor transfers, repositioning stations and integrating ergonomic work surfaces with conveyors.

OMTEC PBT'S HAVE NO PINCH POINTS!



Application is limited only by your imagination!



At the flip of a switch...

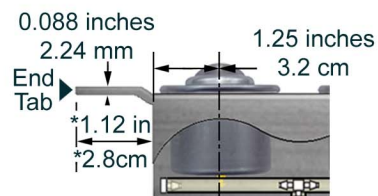
Omtec PBT Ball Transfers raise above the conveyor rollers to move items off of the conveyor line with minimal effort.

Flip the switch again...

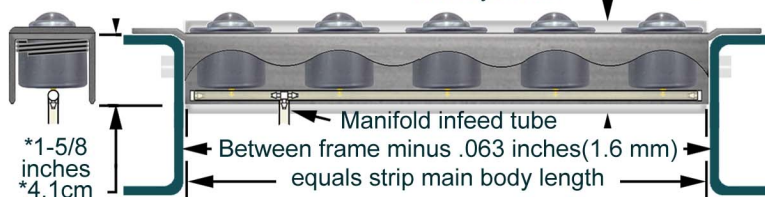
Omtec PBT Ball Transfers retract below the conveyor rollers allowing items not transferring, to move on the rollers unaffected by the ball transfer strips.

#6 x 32 threads per inch, flat head counter sink mounting screws with lock washer and nut are supplied.

*2 inches
*5.1cm



PBT Ball Transfer Strips are available with end tabs for mounting in conveyors or without end tabs for your own projects and applications.



* For dimension critical applications consult Omtec for tolerances

Omtec standard is to place the first and last ball transfer 1.25 inches (3.2cm) C/L from each end of the main body (between frame dimension). The other PBTs are evenly spaced.

Omtec PBT Ball Transfer Strips may be any length.

The number of PBT Ball Transfers on a strip may be varied and located on any center lines desired. The minimum center line is 2 inches (5.1cm).

Omtec PBT Ball transfers are pneumatic (air operated) and virtually any air control device may operate them.

Free application engineering support is only an e-mail or phone call away!

Need more information, have questions?

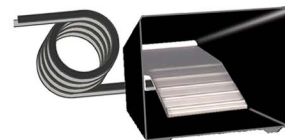
The air in feed line is a single 0.180 I.D. X 0.265 O.D. polyurethane tube under the strip between the first and last ball. The standard in feed tube supplied is 8 inches (20.3cm) long attached between the first and second ball, but can be any length or location on the strip desired.

In the majority of applications simple non-electric foot and hand valves are used. The Omtec PBT Ball Transfers use very low air volume at 50 PSI, The air volume usually is not a consideration. Each up and down cycle of one ball uses .00038 cubic feet (.000108 cubic meter) of air.

Like all pneumatic devices a Filter, Regulator & Lubricator is required. Omtec has FRL Kits available.



CH-1 Detented Hand Toggle Valve Kit



CF-1 Non-Detented Foot Valve Kit

Control kits include Detented Hand Toggle Valve or Non-Detented Foot Valve. Kits include the 3 shown fittings and 8 feet (2.44 meters) of PT4 Twin Tubing attached. Other control kits available on request!